

MODEL 625-RPD DIFFERENTIAL PILOT (NORMALLY CLOSED)

PRODUCT OVERVIEW

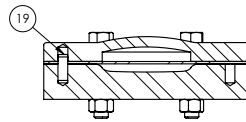
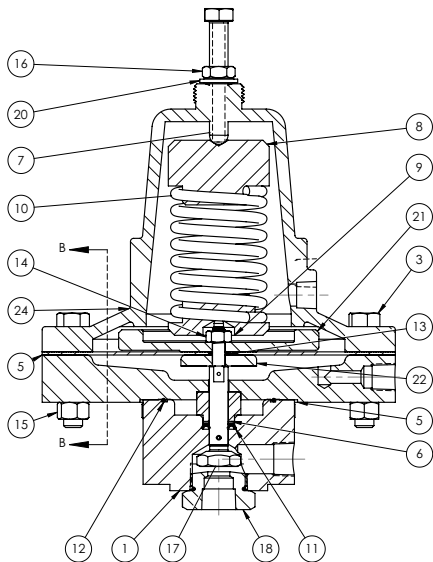
The model 625-RPD is a remote sensing, spring and diaphragm operated, normally closed pilot with large diaphragm area for increased sensitivity.

The pilot opens when the control pressure exceeds the spring force or the differential established by the spring.

The model 625 is used for special applications where a low pressure set point or highly sensitive and responsive pilot is required.

ORDERING INSTRUCTIONS

Refer to page 244 for the order form and ordering instructions.



1. Adjusting Screw (Stainless Steel)
2. Locknut (Stainless Steel)
3. Thread Seal (Steel & Buna-N)
4. Spring Step (Brass)
5. Spring (Stainless Steel)
6. Clamp Plate Nut (Stainless Steel)
7. Clamp Plates (Brass)
8. Diaphragm Flange (Ductile Iron)
9. Bonnet (Brass)
10. Body (Bronze)
11. Seat Ring (Stainless Steel)
12. Bottom Cap (Brass)
13. Spring Casing (Ductile Iron)

Standard Materials:

Other standard material of the pilot construction include stainless steel, Buna-N, and brass

X - RPD High Pressure Sensing Connection - 1/4 in NPT

Y - RPD Low Pressure Sensing Connection - 1/4 in NPT